

1 Introduction

This document explains how to setup an AVB network for use with an AudioScience AVB audio device. These instructions assume a basic working knowledge of AVB network audio, though details will be given. More information on AVB is available from the AVnu Alliance website: <http://www.avnu.org/>

2 Requirements

- AudioScience Hono AVB device
- Network switch with AVnu certified AVB support. Compatible switches are:
 - Extreme X430, X440 and X460 switches with AVB license installed and firmware v15.5.3.4 or greater
- Computer with Ethernet NIC (ideal configuration should have 2 NICs, 1 for AVB and 1 for Ethernet network)
- Secondary AVB device (to send audio to or receive from, an XMOS AVB endpoint was used for this document)
- DHCP server to assign IP addresses to network devices
- AudioScience Hono AVB Controller http://www.audioscience.com/internet/products/avb/hono_avb_controller.htm
- ASIControl Standalone software
- WinPcap software installed

3 Setup

1. Power up your network equipment, including the DHCP server and AVB switch.
2. Connect your Hono AVB Mini to your AVB switch with a high quality Ethernet cable.
3. Connect your secondary AVB device to your AVB switch.
4. Connect the AVB dedicated network adapter to the AVB switch.
5. Power up the AudioScience Hono AVB Mini and other AVB devices
6. Install the Hono AVB Controller software
7. Copy the ASIControl Standalone executable to your desktop (asictrludp.exe)

4 Operation

1. Open ASIControl Standalone, if everything is detected properly you should see something similar to Figure 1. (IP address will be different according to your network settings)

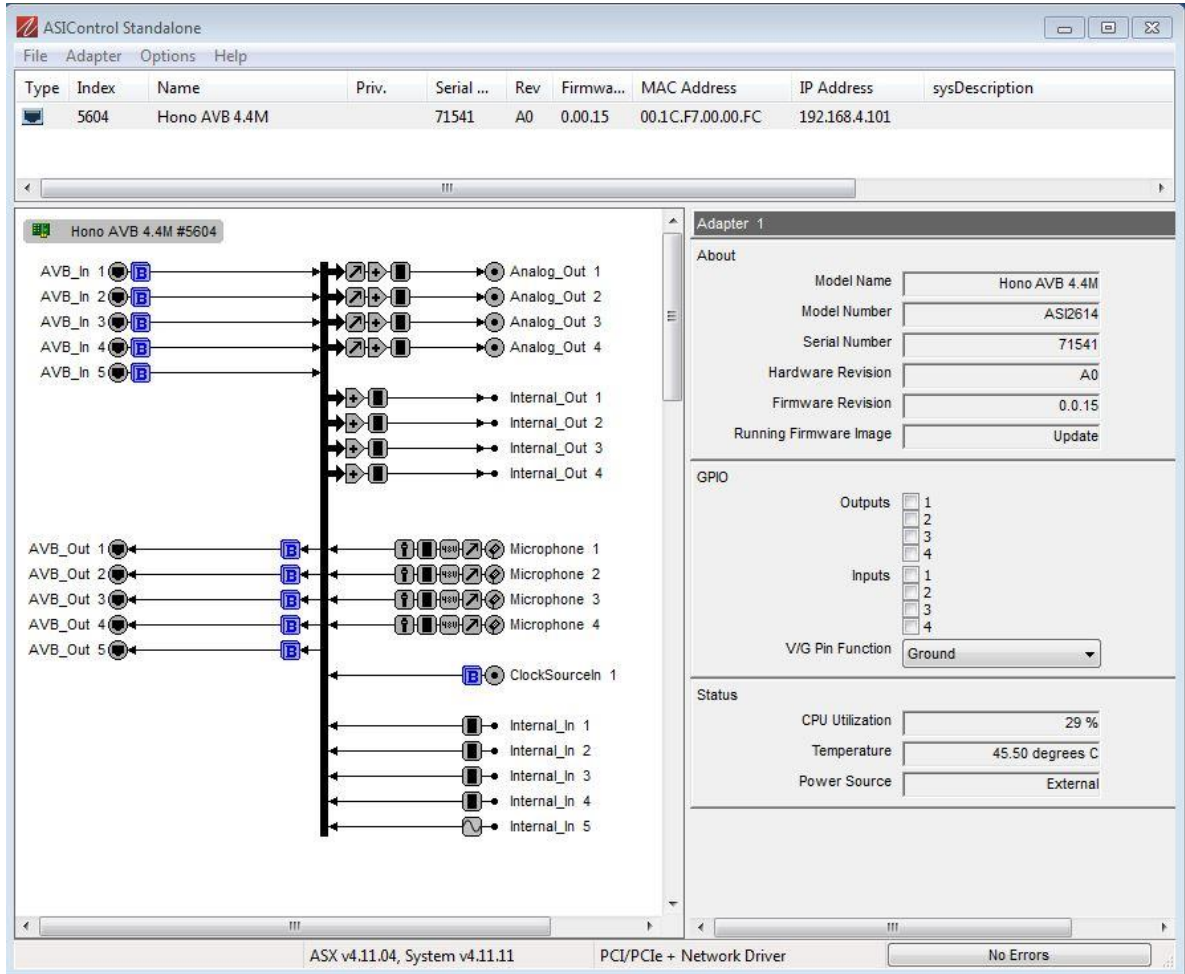


Figure 1 ASIControl for AVB

2. Open the Hono AVB Controller software. It should look something like this:

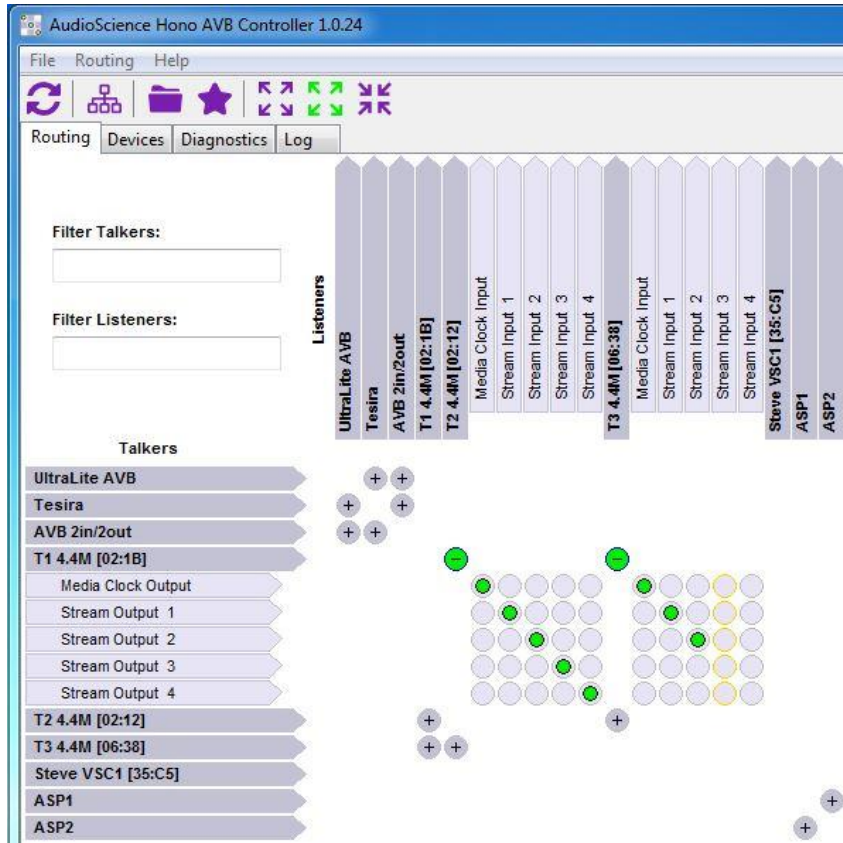


Figure 2 Hono AVB Controller main screen

The Hono AVB Controller software acts as a routing matrix to allow configuration of streams from one device to another. For an in depth guide to using the Hono AVB Controller, check out the datasheet here:

http://www.audioscience.com/internet/products/avb/datasheet_hono_avb_controller.pdf

You can use the controller to set streams and route all AVB devices, not just AudioScience gear.