



NOTE 26

Hono AVB Firmware Update

NOTE: This information has been moved to the datasheets for individual Hono AVB products. Please consult those documents for updated instructions. This note has been deprecated as of October 2020 and will not be updated further.

1 Introduction

This note covers updating the firmware on a Hono AVB Custom and the Hono AVB Mini series. Models covered are the Hono AVB 2.2M, 2.2D, 4.4M and 4.4D and Hono AVB Custom ASI2620.

2 Requirements

- AudioScience Hono AVB device (network accessible)
- ASIControl software
- Browser (optional)
- Firmware update file (should have similar naming to asi_hono_avb_debug_#.#.#.bin.gz)
 - Note: You can find firmware files on our website on the product page for your unit.
- The IP address of unit (if using web browser method)

NOTE: See appendix for important information on retaining settings during an update

3 Procedure for updating the firmware

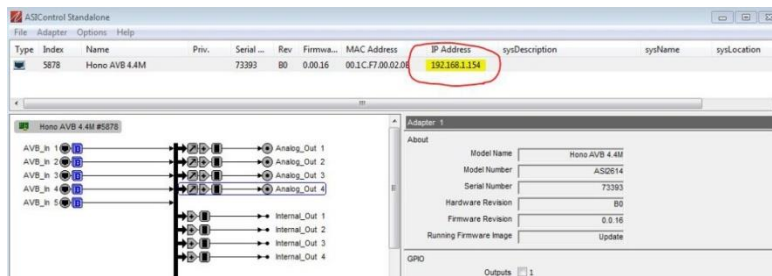
There are 2 ways you can update the firmware in a Hono AVB device.

1. Using a web browser
2. Using ASIControl (driver 4.20.xx or later)(Windows only)

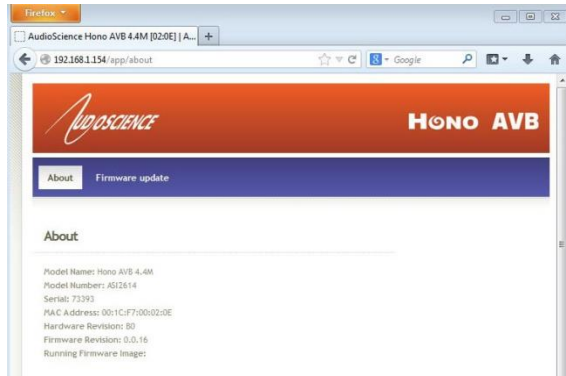
4 Updating firmware using a web browser

4.1 Windows

1. Make sure ASIControl is available.
2. Power up the Hono AVB device.
3. Open ASIControl, confirm that the Hono AVB device is accessible.
4. Locate the unit's IP address in the top section of ASIControl (a DHCP server on the network can be used to assign an IP address, otherwise the device will auto assign itself a 169.xxx.xxx.xxx address).



5. Open your web browser and enter the IP address into the address bar.



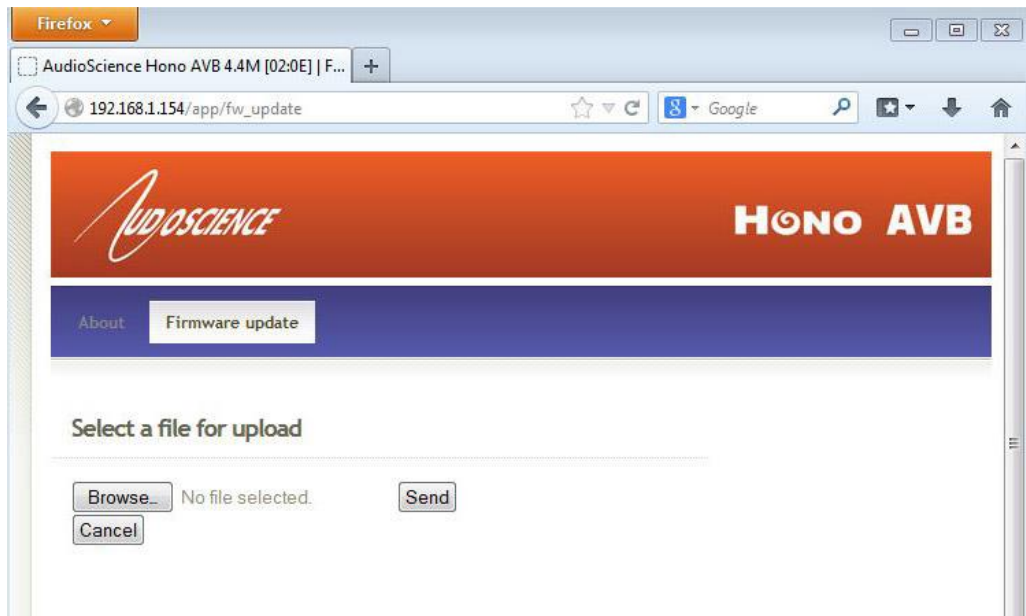
4.2 Linux/OSX

The Linux/OSX method uses ZeroConf/Bonjour to lookup up the device's IP address. Linux should have Avahi installed.

Open a web browser and type **asi2614-73393.local** in the URL box (where 73393 would be replaced with the serial number of the target Hono AVB device).

4.3 Firmware Update

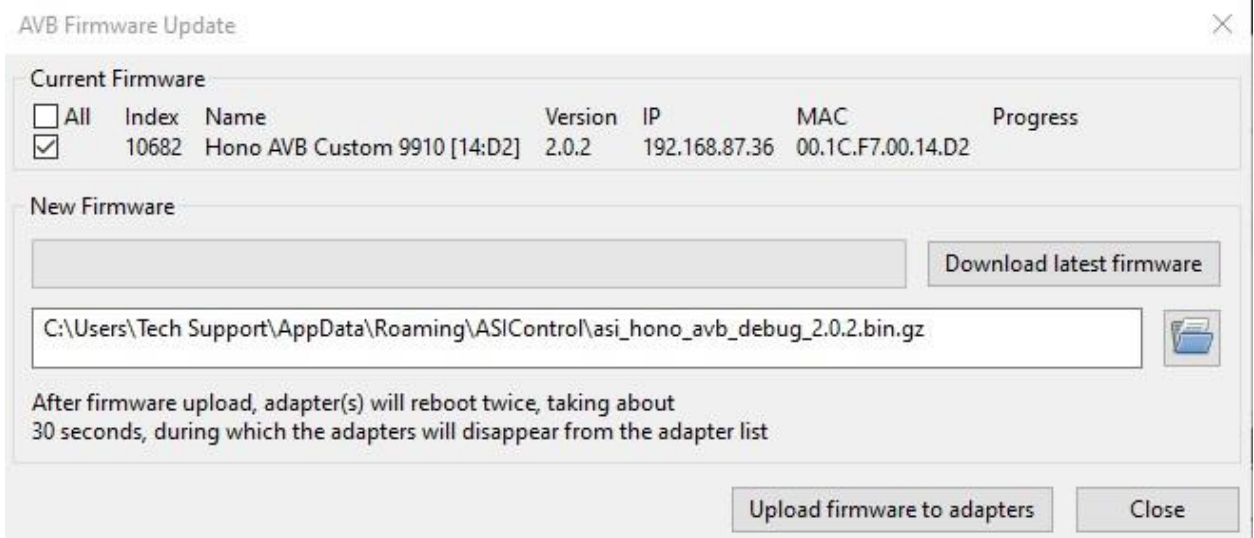
1. Click the "Firmware update" option.



2. Click the "Browse" button, the "File Upload" box will appear. Locate the new firmware file (it will be a *.gz file) on your desktop and click "Open". This will show up in place of the "No file selected" text next to the "Browse" button. Click "Upload" to upload it to the device.
3. When the file upload is complete, "Firmware update report" will show in the browser window, the device will reboot and after about 60 seconds it will be ready for use. Click the "reload" button to refresh your browser. You can confirm the firmware update was completed by comparing the "Running Firmware Revision" info to the filename you uploaded

5 Updating firmware using ASIControl

1. Open ASIControl by double clicking the desktop icon.
2. Locate the device you wish to update in the top panel and right click it to open the drop menu.
3. Click "Update AudioScience Firmware..."
4. The "AVB Firmware Update" window will appear.



5. To obtain the most up to date firmware available click the "Download latest firmware" button to check our website for the latest file.
6. If you wish to use the version associated with the driver and ASIControl version you have installed it should be pre-filled in the path window as above.
7. You can also choose a different specific file by clicking the folder icon to the right of the box.
8. If you have multiple devices on your network, you can also click several of them in the top section to have them all update at the same time. We recommend you test the firmware on one system first before deploying it to your entire network.
9. Once you have the version you want loaded in the window, click the "Upload firmware to adapters" button. The firmware will be send to all the checked units and they will automatically reset to load the new version.
10. While the unit resets, you will see "Adapter Unavailable" in the left pane of ASIControl. Once it is done rebooting it should re-appear (usually about 30-45 seconds).

6 Appendix

In some cases a unit will revert to its factory default settings when updating the firmware. We recommend that you perform a "Configuration -> Save to File" operation in ASIControl to save a copy of your current settings so that you can restore them if the firmware update erases them. See the ASIControl section of the datasheet for more information on how to do this.

When updating from one generation of firmware to a newer one (1.x.x to 2.x.x, etc) you **MUST** reset the settings **BEFORE** updating the firmware. You should still be able to perform a Save/Restore as outlined above in these cases.