



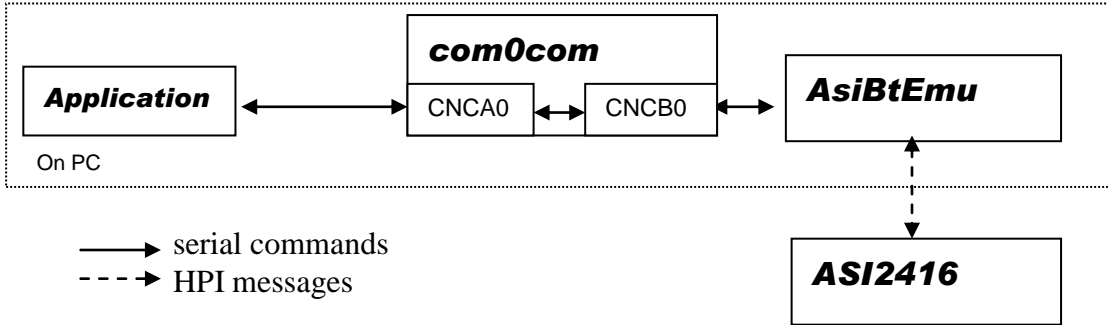
AudioScience Broadcast Tools Emulator

Quick Start Guide

BT Serial Command Emulation Program

1 Introduction

AsiBtEmu.exe allows an AudioScience audio adapter to be controlled using the Broadcast Tools switcher serial command set. This document explains how install AsiBtEmu.exe in a Windows PC and verify that the emulation is working.

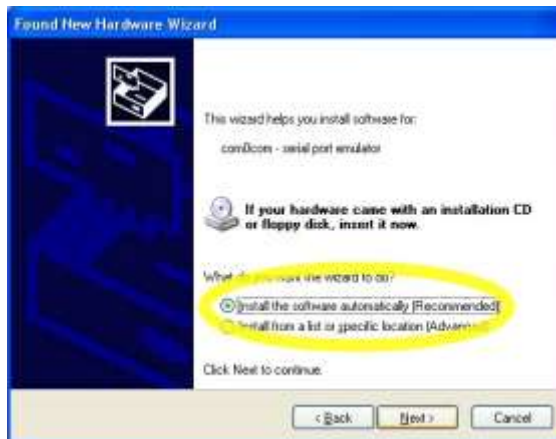


2 What you will need

- A PC running Windows XP or Windows 7.
- An AudioScience ASI2416 configured with 2 analog, 1 digital, and 1 GPIO module.
- AudioScience's Windows device driver 3.14 or newer; installed with network support (second option when EXE is run).
- NOTE: The ASI2416 needs a static or a dynamic IP address. A static or dynamic IP address can be assigned by running either ASIControl.exe or CNDisco.exe somewhere on the same network to assign the IP address.

3 Installation

1. Run AsiBtEmu_Win32.exe; click Next on the 'Start Copying Files' pop up. Click Next on the 'Null-modem emulator (com0com) Setup' pop up. Click I Agree on the 'Null-modem emulator (com0com) Setup' License Agreement.
2. At the 'Choose Components' pop up of the com0com install, accept default settings by clicking Next. On the 'Choose Install Location', click Install to install in default destination folder. When completed, click Next. On the next pop up, click Finish.
3. The Windows Found New Hardware Wizard will pop up two times, one right after the other. In both cases, skip the Internet search option (as in the following image on the left) and select automatic driver search (as in the image on the right).



4 Testing

1. Launch AsiBtEmu (from Start→All Programs→AudioScience→AsiBtEmu→AsiBtEmu→BT serial command emulator). At the next pop up, select the Network Adapter and BT Unit ID to HPI Adapter Mappings. Note that if Windows Firewall is on, a Windows Security Alert window will pop up; click Unblock to allow asibtemu to work correctly. Leave the AsiBtEmu window open (do not close it) to allow BT emulation.
2. Launch HyperTerminal (from Start→All Programs→Accessories→Communications→HyperTerminal) to create a new connection:
 - a) In the 'Connection Description' dialog box, type in a name and choose an icon to represent the new connection. Click OK.
 - b) In the 'Connect To' dialog box, select 'CNCA0' from the Connect using: dropdown list. Click OK.
 - c) In the 'CNCA0 Properties' dialog box, set the Port Settings as follows, then click OK:
 - Bits per second: 921600
 - Data bits: 8
 - Parity: None
 - Stop bits: 1
 - Flow control: None
3. The HyperTerminal is open; the name assigned to the connection appears in the menu bar; top left. Send commands by typing in HyperTerminal. **Note** that the default is that commands do not appear in the HyperTerminal window. To change this so commands are seen in the HyperTerminal window as they are typed, click on File→Properties. In the Properties pop up, select the Settings tab. Click on the ASCII Setup... button. In the 'ASCII Setup' dialog box, check 'Echo typed characters locally' and then click OK. Click OK on the next dialog box. Typed commands will now appear in the HyperTerminal window. Verify responses by checking mixer settings using ASIControl.

Example commands (note that there is an asterisk at the beginning of each command):

- ***POLL** – connected unit responds with its unit ID (usually '0')
- ***1SL** – reports audio connection status
- ***1015** – connect input 1 to output 1 without changing other connections
- ***1025** – connect input 2 to output 1 without changing other connections

4. For additional information on commands, see page 15 and on in the following PDF file (check relnotes.txt to see what commands are implemented in AsiBTEmu):

http://www.broadcasttools.com/manuals/Manual_SS16x4.pdf.

If you have any questions please e-mail us at support@audioscience.com, we will be happy to assist you. Thank you for choosing AudioScience products.

<end>