



## **Livewire IP-Audio Quick Start Guide**

### **32/64 Channel Axia Compatible IP-Audio Driver**

## **INSTALLATION/UPDATE**

Download the AudioScience Livewire IP-Audio driver from our website. Go to [www.audioscience.com](http://www.audioscience.com), under Products, click “Network Audio” then click the “Livewire IP-Audio Driver” link. You will find the download link in the “Drivers” section in the right hand column. Save it in a known location. Double click the file, within the zipped download file there are 2 options for installation: a 32-bit version and a 64-bit version. Choose the one that is appropriate for your system and double click it to start the installation.

You should see this screen (version number may be different):



Click next and you will see the “End-User License Agreement” screen. You must accept the terms and then click Next> to proceed.

The next screen asks for your User Name and Organization, enter those here and click Next>

This will take you to the “Ready to Install” informational page, click Install to proceed or Back if you need to change any information on the previous screens.

You will then see a “Installing AudioScience Livewire Driver...” progress indicator window. This could take 20 seconds or longer to complete.

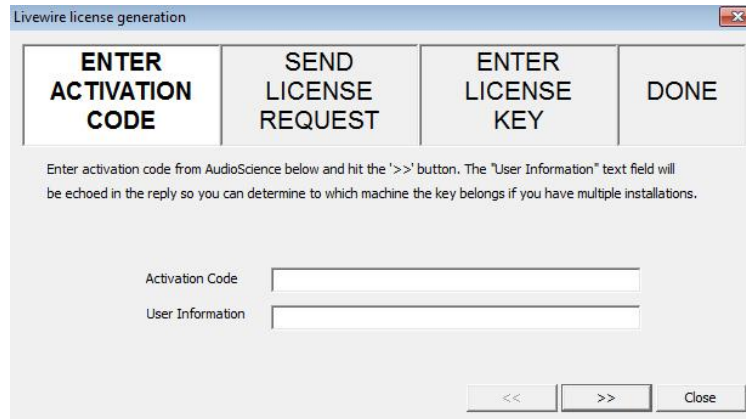
Next you will be presented with a Windows Security dialog box asking “Would you like to install...” click Install. You will then see a second box with the same question, click Install again.

The install portion of the process should be completed and you should see this screen:



Be sure to leave the “Run activation on exit” box checked if this is your first time installing. If you are updating your driver you should not be prompted to activate again.

Click Finish to begin the activation process, you will see this screen: (note: if this screen does not pop up, go to your Windows Start menu, open the “AudioScience” folder, open the “Livewire IP-Audio Driver” folder, click on the “ASI Livewire Driver Activation” icon. This will start the process manually. We are currently working on an issue with Microsoft to resolve this problem)



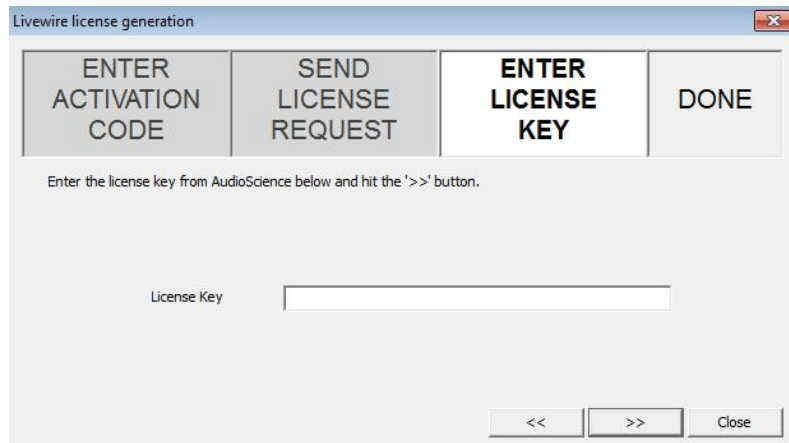
Enter the Activation Code you were given when you purchased your software and your User Information from the activation email then press >> to continue to the next step.

You will be taken to the “Send License Request” screen which looks similar to this.

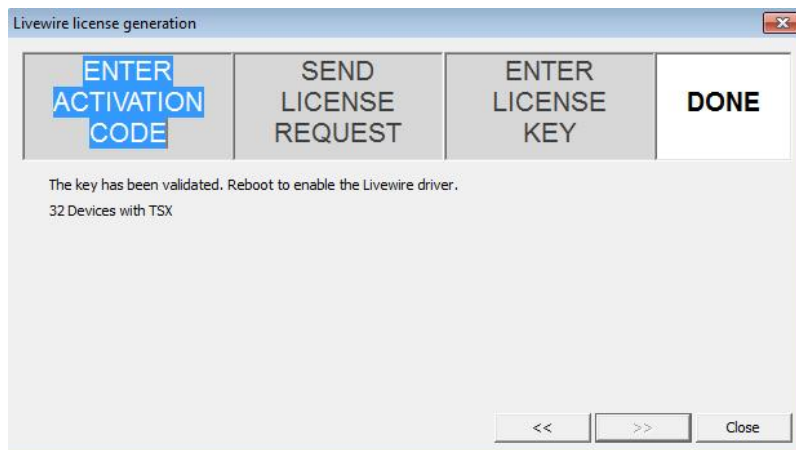


You will need to copy and paste the data in this window into an email. Send the email to [keys@audioscience.com](mailto:keys@audioscience.com) from a valid email address, we will send your license key to this address. Click >> when you are done.

The next screen is the “Enter License Key” dialog box. When you receive your email with the License Key, either copy & paste the information here or carefully enter the key and click >> when finished.



You will then see the “Done” screen below with confirmation of the version you have installed:



You MUST reboot your system to use the driver. <end>